

WWW.ANENGLAB.COM

Tel:86-755-27724522

Fax:86-755-27724533



Declaration of Conformity

Certification No. : ATJC2008270001500R
Applicant : DRAGON STAGE EQUIPMENT (HK) CO., LIMITED
Address : RM 1101, 11/F, SAN TOI BLDG, NO.139, CONNAUGHT RD
 CENTRAL, HK, China.
Manufacturer : Foshan Dragon Stage Equipment Co., Ltd
Address : No.3-2, Hengsan Road, Heshun Xiaxi Industrial Area, Lishui Town,
 Nanhai District, Foshan, Guangdong, China.
Certification Marking : CE-RoHS
Product Description : Aluminium Scaffolding Tower
Model : SDB-1, SDB-2, SDB-3, SDB-4, SDB-5, SDB-6, SDB-7.
Trademark : DRAGON STAGE

An independent evaluation on the above-mentioned product(s) has been conducted pursuant to EU 2015/863 with 2011/65/EU of the European Parliament and of the Council on the restriction of the use of certain hazardous substances in electrical and electronic equipment, and concluded that the equipment under evaluation met the legislative requirements of this directive.

Test standard:

IEC 62321-4:2013+A1:2017, IEC 62321-5:2013, IEC 62321-7-1:2015, IEC 62321-7-2:2017,
 IEC 62321-6:2015, IEC 62321-8:2017



Authorized Signer:



Joseph Yang / Manager
 August 31, 2020

Shenzhen An-Teng Testing Service Co., Ltd

Room 402-405, Floor 4th, Building C, Yuxing Technology Industrial Park, Xixiang Street, Bao 'An District, Shenzhen, Guangdong, China



Report No.: ATJC2008270001500R

RoHS TEST REPORT

For

Aluminium Scaffolding Tower

Model No.: SDB-1, SDB-2, SDB-3, SDB-4, SDB-5, SDB-6, SDB-7.

Trademark: DRAGON STAGE

Applicant : DRAGON STAGE EQUIPMENT (HK) CO., LIMITED
RM 1101, 11/F, SAN TOI BLDG, NO.139, CONNAUGHT RD
CENTRAL, HK, China.

Manufacturer: Foshan Dragon Stage Equipment Co., Ltd
No.3-2, Hengsan Road, Heshun Xiayi Industrial Area, Lishui
Town, Nanhai District, Foshan, Guangdong, China.

Issued By : Shenzhen An-Teng Testing Service Co., Ltd.
Room 402-405, Floor 4th, Building C, Yuxing Technology Industrial
Park, Xixiang Street, Bao'an District, Shenzhen, Guangdong, China.



Tel : +86 755 27724522

Fax : +86 755 27724533

Report Number : ATJC2008270001500R

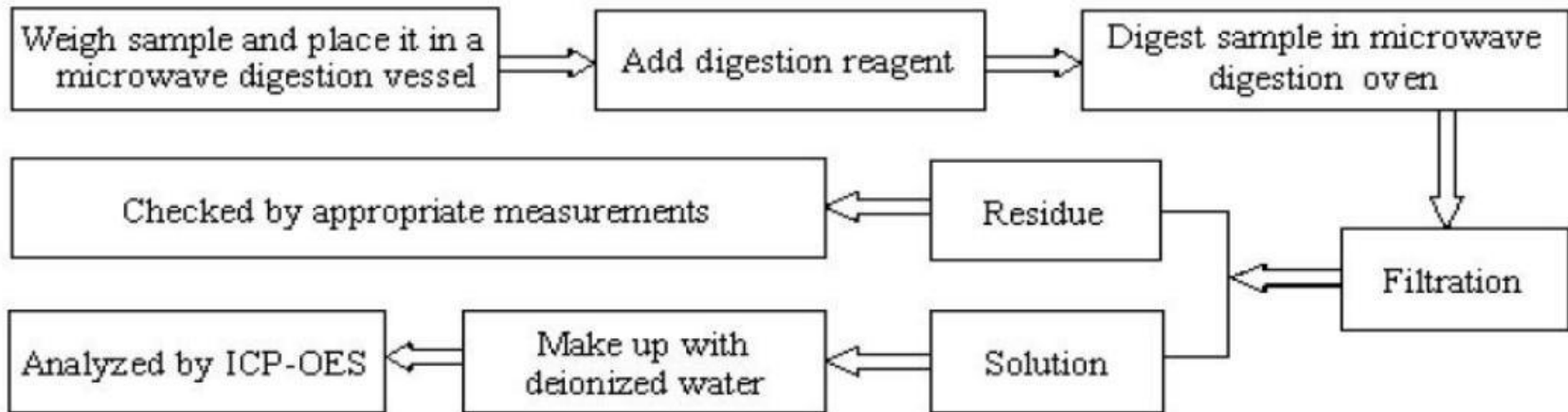
Date of Test : August 31, 2020

Date of Report : August 31, 2020

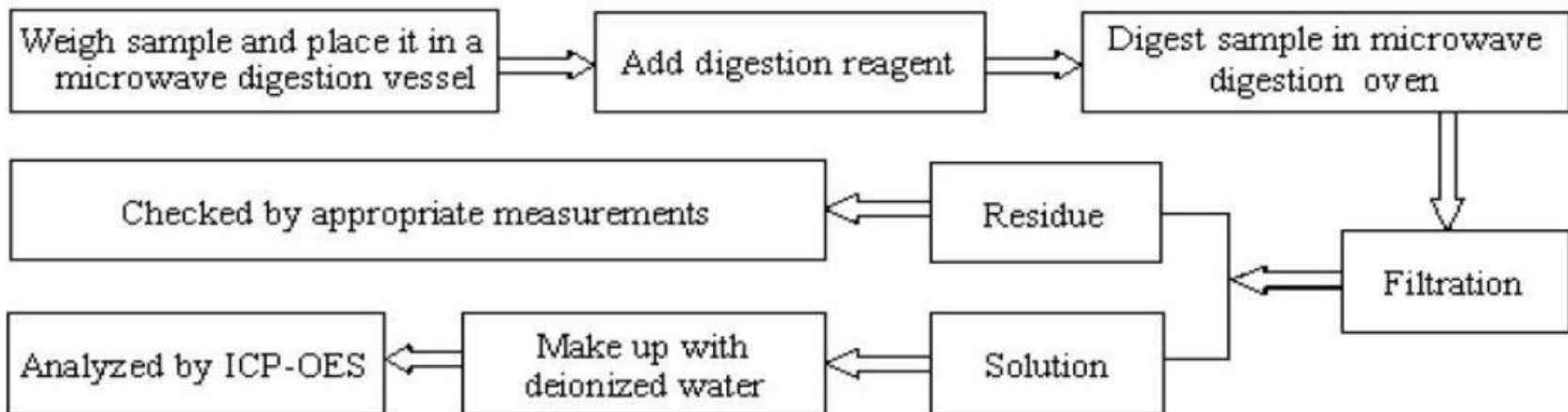
Note:

This report shall not be reproduced except in full, without the written approval of Shenzhen An-Teng Testing Service Co., Ltd. This document may be altered or revised by Shenzhen An-Teng Testing Service Co., Ltd personnel only, and shall be noted in the revision section of the document. The test results in the report only apply to the tested sample.

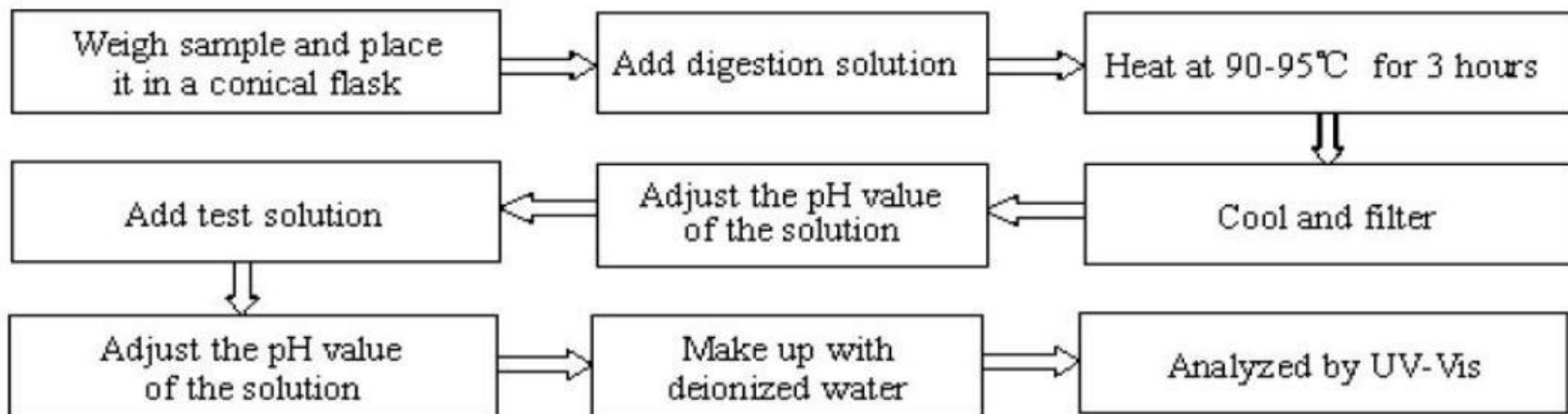
1. Lead(Pb), Cadmium(Cd)



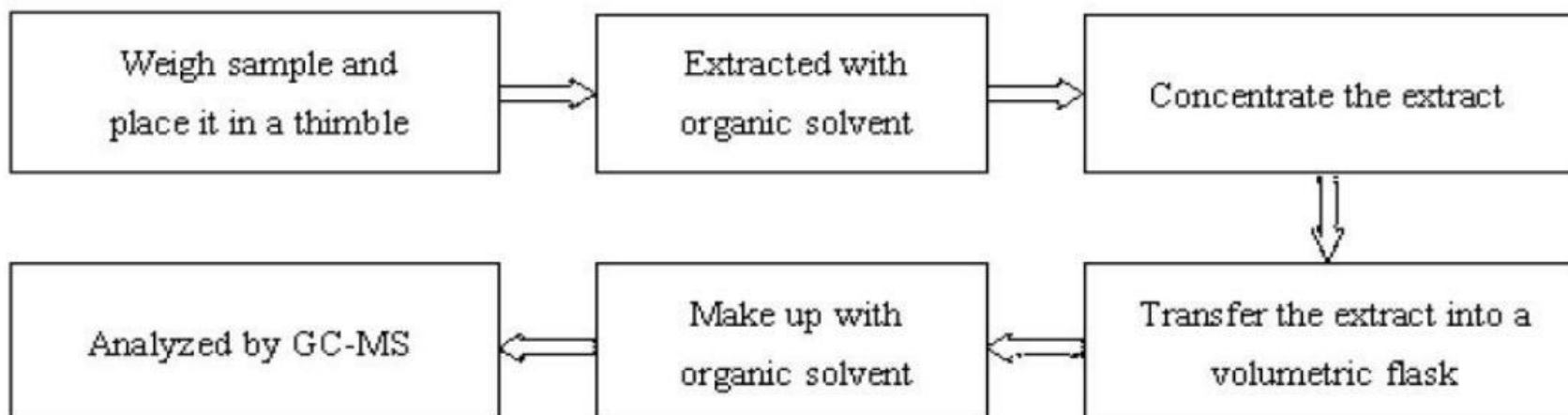
2. Mercury(Hg)



3. Hexavalent Chromium (Cr(VI))



4. Polybrominated Biphenyls (PBBs), Polybrominated Diphenyl Ethers(PBDEs), DIBP, DBP, DEHP, BBP



Test Method:

Tested Item(s)	Test Method	Measured equipment(s)	Limits
Cadmium(Cd)	IEC 62321-5:2013	ICP-OES	0.01%(100 ppm)
Hexavalent chromium(Cr VI)	IEC 62321-7-1:2015 IEC 62321-7-2:2017	UV-Vis	0.1%(1000 ppm)
Mercury(Hg)	IEC 62321-4:2013+A1:2017	ICP-OES	0.1%(1000 ppm)
Lead(pb)	IEC 62321-5:2013	ICP-OES	0.1%(1000 ppm)
Polybrominated Biphenyls(PBBs)	IEC 62321-6:2015	GC-MS	0.1%(1000 ppm)
Polybrominated Disphenyl Ethers(PBDEs)	IEC 62321-6:2015	GC-MS	0.1%(1000 ppm)
Diisobutyl phthalate(DIBP)	IEC 62321-8:2017	GC-MS	0.1%(1000 ppm)
Di-(2-ethylhexyl) phthalate (DEHP)	IEC 62321-8:2017	GC-MS	0.1%(1000 ppm)
Dibutyl phthalate (DBP)	IEC 62321-8:2017	GC-MS	0.1%(1000 ppm)
Benzylbutyl phthalate (BBP)	IEC 62321-8:2017	GC-MS	0.1%(1000 ppm)

Result	:	Pass
Conclusion	:	An independent evaluation on the above-mentioned product(s) has been conducted pursuant to EU 2015/863 with 2011/65/EU of the European Parliament and of the Council on the restriction of the use of certain hazardous substances in electrical and electronic equipment, and concluded that the equipment under evaluation met the legislative requirements of this directive.

Tested by



Nico Liang
Engineer
August 31, 2020

Reviewed by



Joseph Yang
Manager
August 31, 2020

Test Data Summary

SAMP LE NO.	COMPONENTS	Item	Results of EDXRF (P/F/D)	Results of testing(mg/kg)	Chemical testing limit (mg/kg)	Conclusio n (P/F)
1	Aluminium alloy of bracket	Cd	P	N.D.	<100	P
		Cr VI	P	N.D.	<1000	P
		Hg	P	N.D.	<1000	P
		Pb	P	N.D.	<1000	P
		PBBs	D	N.D.	<1000	P
		PBDEs	D	N.D.	<1000	P
		DIBP	D	N.D.	<1000	P
		DEHP	D	N.D.	<1000	P
		DBP	D	N.D.	<1000	P
		BBP	D	N.D.	<1000	P
2	Metal screws	Cd	P	N.D.	<100	P
		Cr VI	P	N.D.	<1000	P
		Hg	P	N.D.	<1000	P
		Pb	P	N.D.	<1000	P
		PBBs	D	N.D.	<1000	P
		PBDEs	D	N.D.	<1000	P
		DIBP	D	N.D.	<1000	P
		DEHP	D	N.D.	<1000	P
		DBP	D	N.D.	<1000	P
		BBP	D	N.D.	<1000	P
3	Support wooden	Cd	P	N.D.	<100	P
		Cr VI	P	N.D.	<1000	P
		Hg	P	N.D.	<1000	P
		Pb	P	N.D.	<1000	P
		PBBs	D	N.D.	<1000	P
		PBDEs	D	N.D.	<1000	P
		DIBP	D	N.D.	<1000	P
		DEHP	D	N.D.	<1000	P
		DBP	D	N.D.	<1000	P
		BBP	D	N.D.	<1000	P
4	Material of wheels	Cd	P	N.D.	<100	P
		Cr VI	P	N.D.	<1000	P
		Hg	P	N.D.	<1000	P
		Pb	P	N.D.	<1000	P
		PBBs	D	N.D.	<1000	P
		PBDEs	D	N.D.	<1000	P
		DIBP	D	N.D.	<1000	P
		DEHP	D	N.D.	<1000	P
		DBP	D	N.D.	<1000	P
		BBP	D	N.D.	<1000	P



Report No.: ATJC2008270001500R

Note:

(1) N.D. = Not detected (<MDL)

(2) ppm = mg/kg

(3) N.A. = Not Analyzed

(4) Negative = the concentration of Hexavalent Chromium extracted from 50cm² sample is less than the detection limit.

(5) Cadmium(Cd), Lead(Pb), Mercury(Hg), Hexavalent Chromium(Cr), PBBs, PBDEs, Dibutyl Phthalate(DBP), Butyl benzyl phthalate (BBP), Di-(2-ethylhexyl) Phthalate(DEHP), Diisobutyl phthalate (DIBP).

Appendix 1

Photo documentation

Photo 1

View:

front

rear

right side

left side

top

bottom

internal



Photo 2

View:

front

rear

right side

left side

top

bottom

internal



Photo 3

View:

front

rear

right side

left side

top

bottom

internal



Photo 4

View:

front

rear

right side

left side

top

bottom

internal



Photo 5

View:

front

rear

right side

left side

top

bottom

internal



Photo 6

View:

front

rear

right side

left side

top

bottom

internal



Photo 7

View:

front

rear

right side

left side

top

bottom

internal



Photo 8

View:

front

rear

right side

left side

top

bottom

internal



Photo 9

View:

front

rear

right side

left side

top

bottom

internal



----- End of report -----